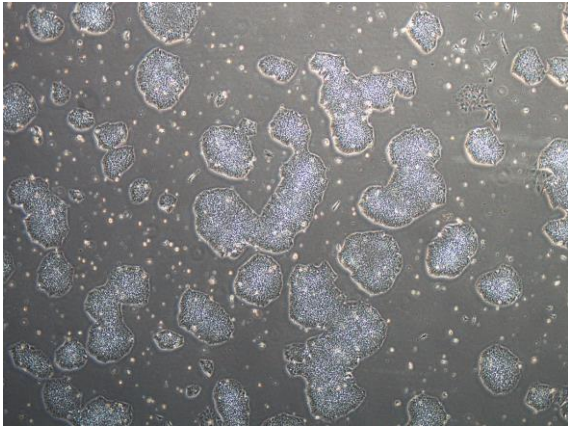
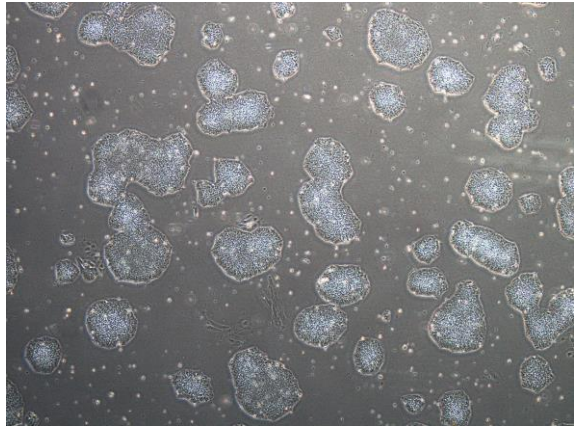


## 【 CiRA-j-1100 】 Morphology of iPSC colonies

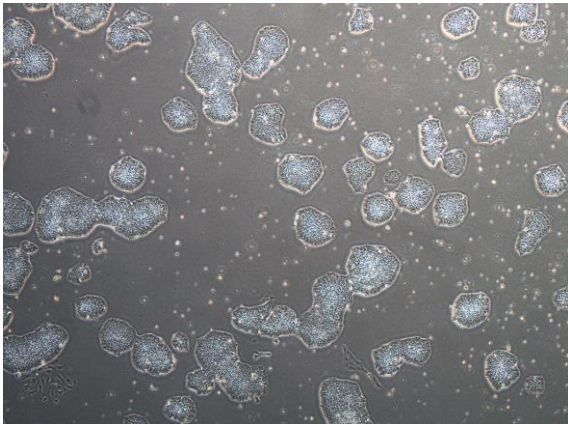
CiRA-j-1100-A: passage-2



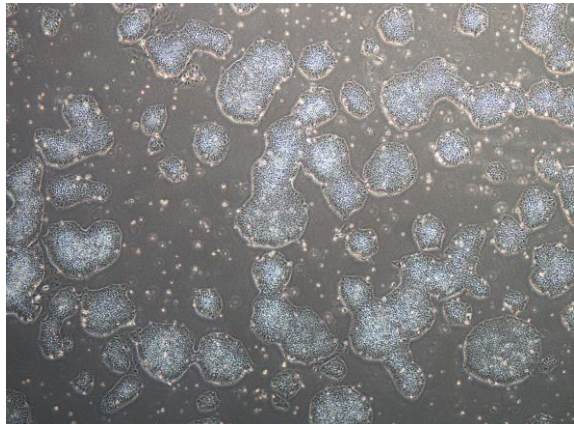
CiRA-j-1100-B: passage-2



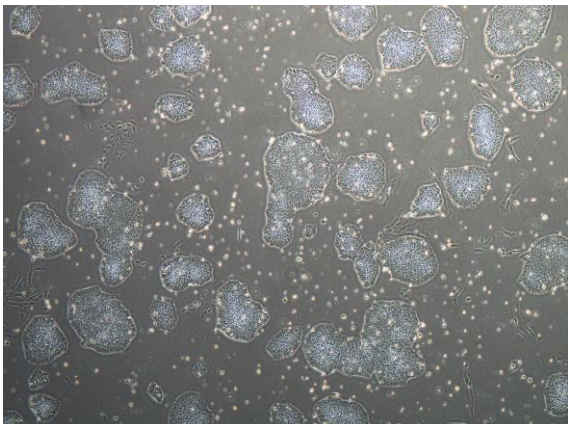
CiRA-j-1100-C: passage-2



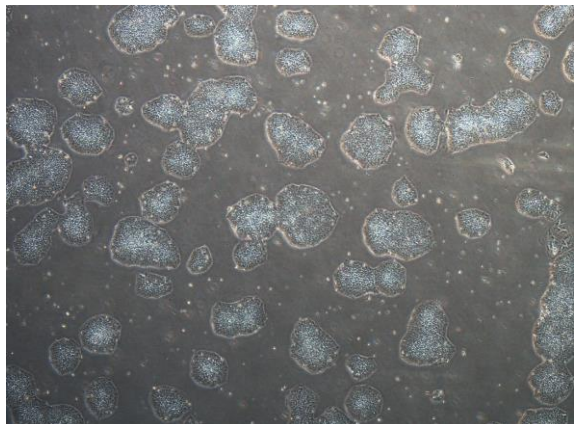
CiRA-j-1100-D: passage-2



CiRA-j-1100-E: passage-2



CiRA-j-1100-F: passage-2



( All images were captured at 4x magnification )